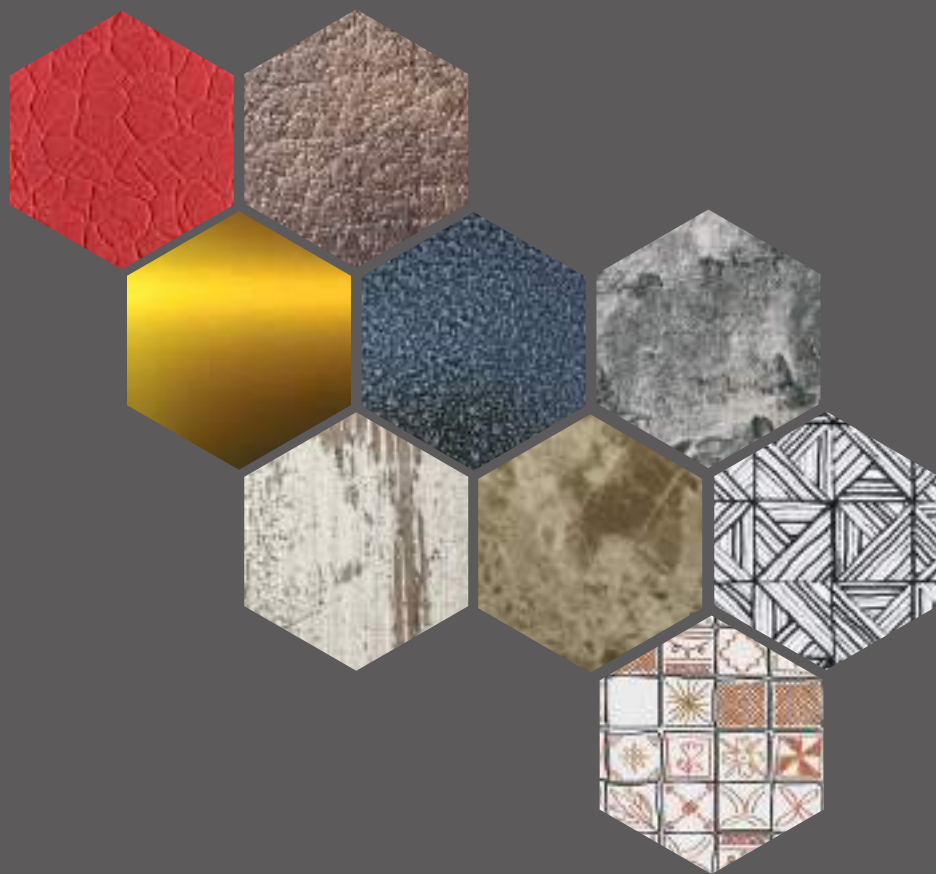


**erc**



*FINISHES AND COLOURS*

**FINITURE E COLORI**

FINISHES AND COLOURS  
**FINITURE E COLORI**



Le essenze e relative finiture che trovate nella presente cartella hanno solo valore indicativo. Per una più corretta interpretazione delle essenze e relative finiture, vi rimandiamo alla consultazione della cartella colore ufficiale. PER IL CORRETTO UTILIZZO DELLE FINITURE CONSULTARE IL CATALOGO TECNICO.

*The woods, colours and finishes in this catalogue are given purely as an indication. Please consult the official CRC colour catalogue for a more accurate illustration of the woods and finishes. PLEASE CONSULT THE TECHNICAL CATALOGUE TO ENSURE THE CORRECT FINISH FOR EACH ITEM.*

# METALLO VERNICIATO

POWDER COATED METAL



Cod. BC  
Bianco  
*White*



Cod. BQ  
Bianco Lucido  
*Shiny White*



Cod. A9  
Avorio  
*Ivory*



Cod. CR  
Crema  
*Cream*



Cod. GP  
Giallo Paglierino  
*Straw Yellow*



Cod. VL  
Verde Acido  
*Acid green*



Cod. V8  
Verde Chiaro  
*Light Green*



Cod. V5  
Verde  
*Green*



Cod. VR  
Verde Muschio  
*Moss Green*



Cod. B6  
Blu  
*Blue*



Cod. GI  
Giallo  
*Yellow*



Cod. AR  
Arancio  
*Orange*



Cod. AL  
Arancio Lucido  
*Shiny Orange*



Cod. RM  
Rosso Mattone  
*Red Brown*



Cod. R3  
Rosso Porpora  
*Red Purple*



Cod. B0  
Blu Pervinca  
*Perwinke Blue*



Cod. BB  
Blu B  
*Blue B*



Cod. BS  
Blu Scuro  
*Dark Blue*



Cod. AM  
Grigio Alluminio Metallizzato  
*Orange*



Cod. BG  
Grigio Beige  
*Grey Beige*



Cod. R2  
Rosso Porpora Lucido  
*Shiny Red Purple*



Cod. R4  
Rosso  
*Red*



Cod. RL  
Rosso Lucido  
*Shiny Red*



Cod. FX  
Fucsia  
*Fuchsia*



Cod. VC  
Verde Acqua  
*Aquamarine*



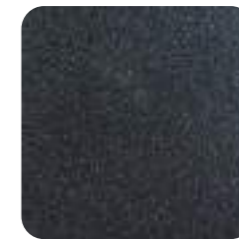
Cod. G9  
Grigio Antracite  
*Grey Anthracite*



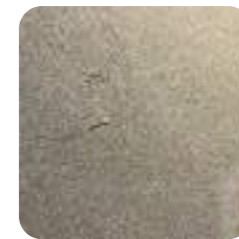
Cod. GR  
Grigio Antracite Lucido  
*Shiny Grey Anthracite*



Cod. GB  
Grigio Marmo  
*Grey Marble*



Cod. GG  
Grigio Ghisa  
*Grey Cast-Iron*



Cod. TL  
Trasparente Lucido  
*Shiny Transparent*



Cod. NB  
Nero  
*Black*



Cod. NL  
Nero Lucido  
*Shiny Black*



Cod. PB  
Plastico Bianco

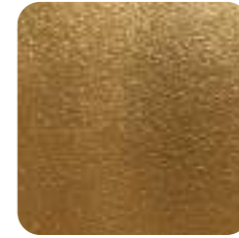


Cod. PG  
Plastico Grigio

## METALLO SPECIALE *SPECIAL METAL*



Cod. OL  
Oro Lucido  
*Shiny Gold*



Cod. OR  
Oro Opaco  
*Opaque Gold*



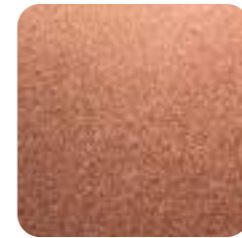
Cod. OX  
Oxide  
*Corten*



Cod. R5  
Rame Martellato  
*Hammered Copper*



Cod. RU  
Ruggine  
*Rust*



Cod. RA  
Rame  
*Copper*



Cod. NG  
Nero Goffrato  
*Embossed Black*



Cod. RT  
Rosso Alligator  
*Red Alligator*



Cod. BT  
Bianco Alligator  
*White Alligator*



Cod. NT  
Nero Alligator  
*Black Alligator*



Cod. AS  
Alluminio Soft  
*Soft Aluminum*

# LEGNO

## WOOD

Piani, schienali, fiancate, mobiletti, alveari, banchi, inserti per copertura montanti e profilo portaprezzi.

*Shelves, back and side panels, cabinets, hives, counters, inserts for upright covers and pricerealis.*



Cod. BC  
Bianco  
White



Cod. BL  
Bianco Lucido  
Shiny White



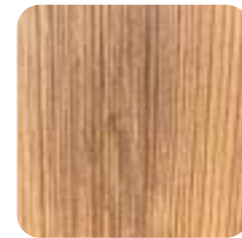
Cod. NK  
Grigio Alluminio  
Aluminum Gray



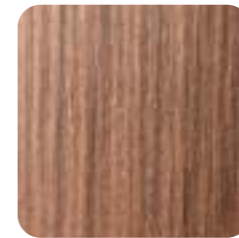
Cod. MG  
Grigio Metallizzato



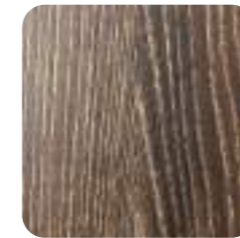
Cod. G9  
Grigio Antracite



Cod. AS  
Abete  
Abies



Cod. WT  
Noce  
Walnut



Cod. MK  
Marrakesh



Cod. OT  
Overcast



Cod. GK  
Grey Oak



Cod. NB  
Nero



Cod. NL  
Nero Lucido



Cod. R4  
Rosso



Cod. V1  
Verde Prato



Cod. BZ  
Blu Sugar



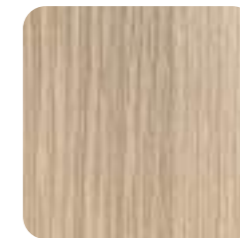
Cod. BK  
Black Oak



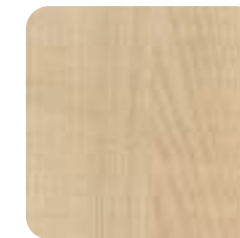
Cod. DS  
Taubenblau  
Dark Stone



Cod. WS  
White Stone



Cod. RB  
Rovere Chiaro



Cod. AC  
Acero



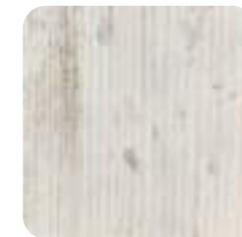
Cod. OX  
Oxide



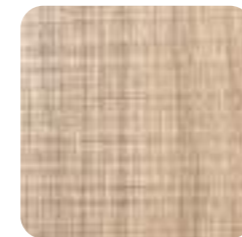
Cod. TR  
Tortora



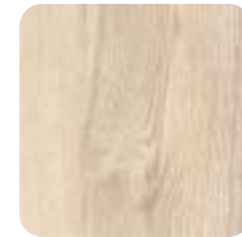
Cod. WH  
White Sharp



Cod. MY  
Miami



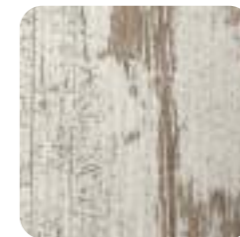
Cod. CL  
Clair



Cod. EL  
Effetto Legno



Cod. NM  
Nadir



Cod. NM  
Neo Matrix

**PIANI DI LAVORO**  
*WORK PLANS*



Cod. IF  
Ice Flower



Cod. SB  
Scotch Brite



Cod. BN  
Bianco Kos



Cod. NI  
Nero Ingo



Cod. GA  
Grigio Londra



Cod. TH  
Titanio Doha



Cod. TW  
Tortora Ottawa



Cod. ZH  
Zinco Doha

**TESSUTI**  
*FABRICS*



Cod. TX  
Tortora Lux



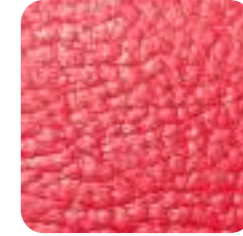
Cod. BX  
Brow Lux



Cod. BU  
Blu



Cod. SR  
Silver



Cod. RP  
Red Passion



Cod. DP  
Damasco Pearl



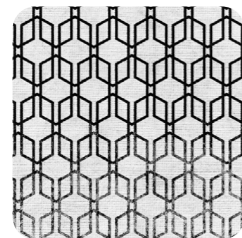
Cod. Dp  
Damasco Blu

## CARTA DA PARATI

WALLPAPER



Cod. LS  
Lines



Cod. HV  
Hive



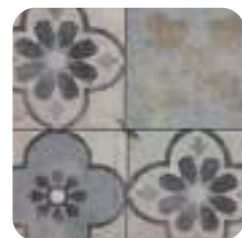
Cod. AL  
Babilonia

## MOSAICI

MOSAICS



Cod. AQ  
Arabesque



Cod. FS  
Flower Stone

## PELLICOLE

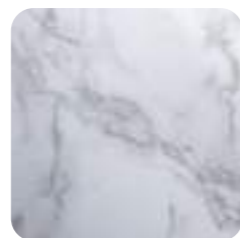
FILMS



Cod. Y4  
Bonze



Cod. Q2  
Ice



Cod. U3  
White Marble



Cod. U5  
Gold Marble

## FINITURE E COLORI

FINISHES AND COLOURS

*Le essenze e relative finiture che trovate nella presente cartella hanno solo valore indicativo. Per una più corretta interpretazione delle essenze e relative finiture, ci rimandiamo alla consultazione della cartella colore ufficiale. PER IL CORRETTO UTILIZZO DELLE FINITURE CONSULTARE IL CATALOGO TECNICO.*

*The woods, colours and finishes in this catalogue are given purely as an indication. Please consult the official CRC colour catalogue for a more accurate illustration of the woods and finishes.*

*PLEASE CONSULT THE TECHNICAL CATALOGUE TO ENSURE THE CORRECT FINISH FOR EACH ITEM.*

- finiture speciali
- special finishes

*LEGNO wood*

*Elementi in legno: di provenienza esclusivamente europea in classe di appartenenza B2/E1 e E1 rispondenti alle più severe legislazioni in materia.*

*Elements in wood: exclusively European in origin, classes B2/E1 and E1, meeting the strictest relevant legal criteria.*

*TESSUTI fabrics*

*Tessuto esente da formaldeide Pct-Pcb-Azo, materiale accoppiato ed imbottitura in poliuretano standard ignifugo con densità uguale a 25Kg/m. - UNI 9175, conforme a iso 3795.*

*Formaldehyde - free fabric ( Pct-Pcb-Azo), laminated material and padding made from standard, fire-resistant polyurethane with a density of 25Kg/m - UNI 9175, complies with ISO 3795.*

*METALLO metal*

*Elementi in metallo: verniciati, in finitura liscia lucida o gofrata e teflonata, con vernici a polvere totalmente atossiche e certificate, cotte a forno.*

*Metal elements: coated, with smooth / embossed / Teflon finish, using fully non-toxic, furnace-fired, certified powder coatings.*

*LACCATI laquered*

*Componenti laccati con metodo lucido diretto, in abbinamento alle parti metalliche, sono prodotte con vernici.*

*Components laquered with the direct-gloss method, combined with coated metal parts*





The logo for CRC, consisting of the lowercase letters 'c', 'r', and 'c' in a bold, sans-serif font, all contained within a solid black square.

*since 1949*

---

*CRC srl  
Viale 5 Giornate 1382  
21042 Caronno Pertusella VA - Italy*

*Tel +39 02 9659001  
Fax + 39 02 9659004  
www.crc.it - crc@crc.it*

